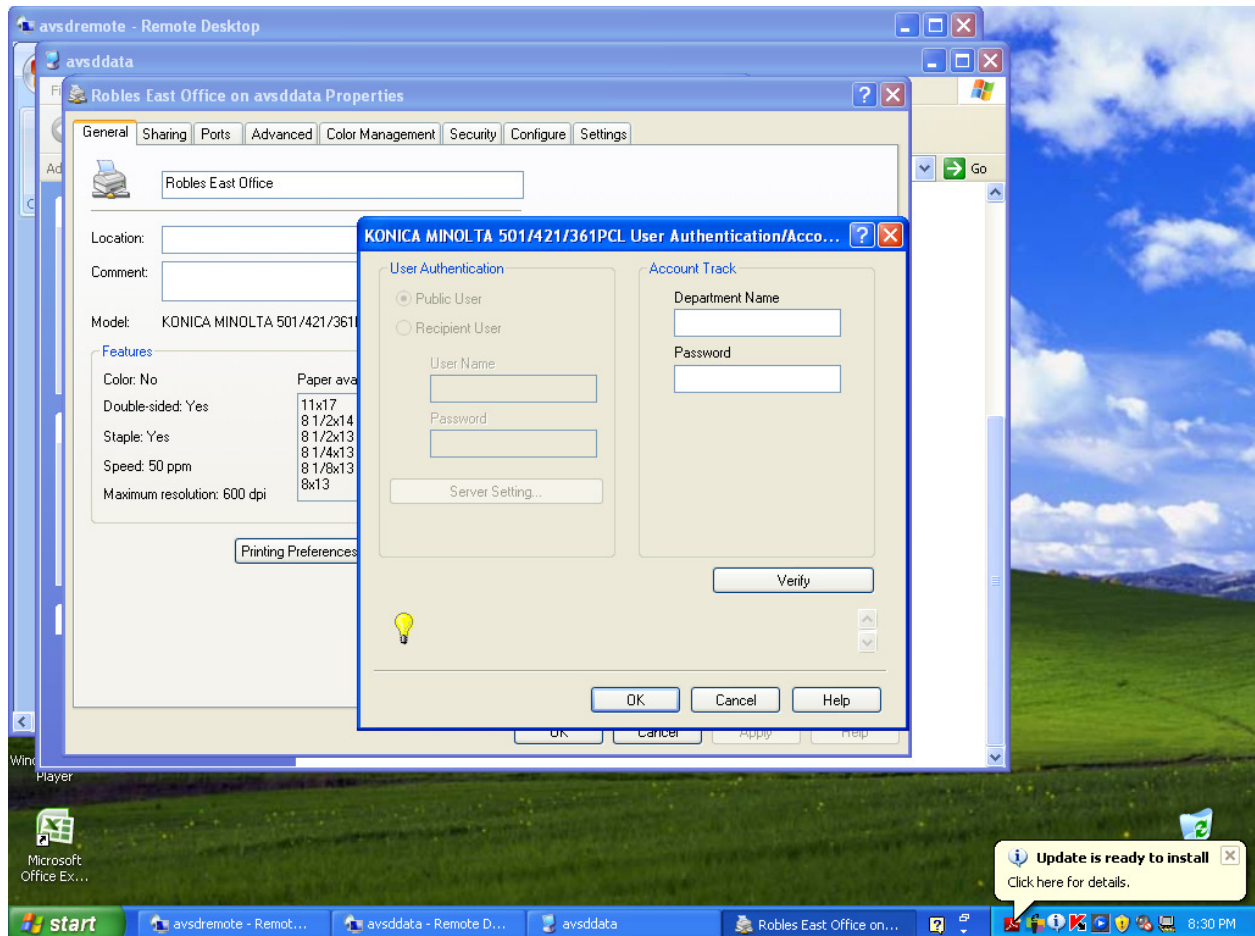
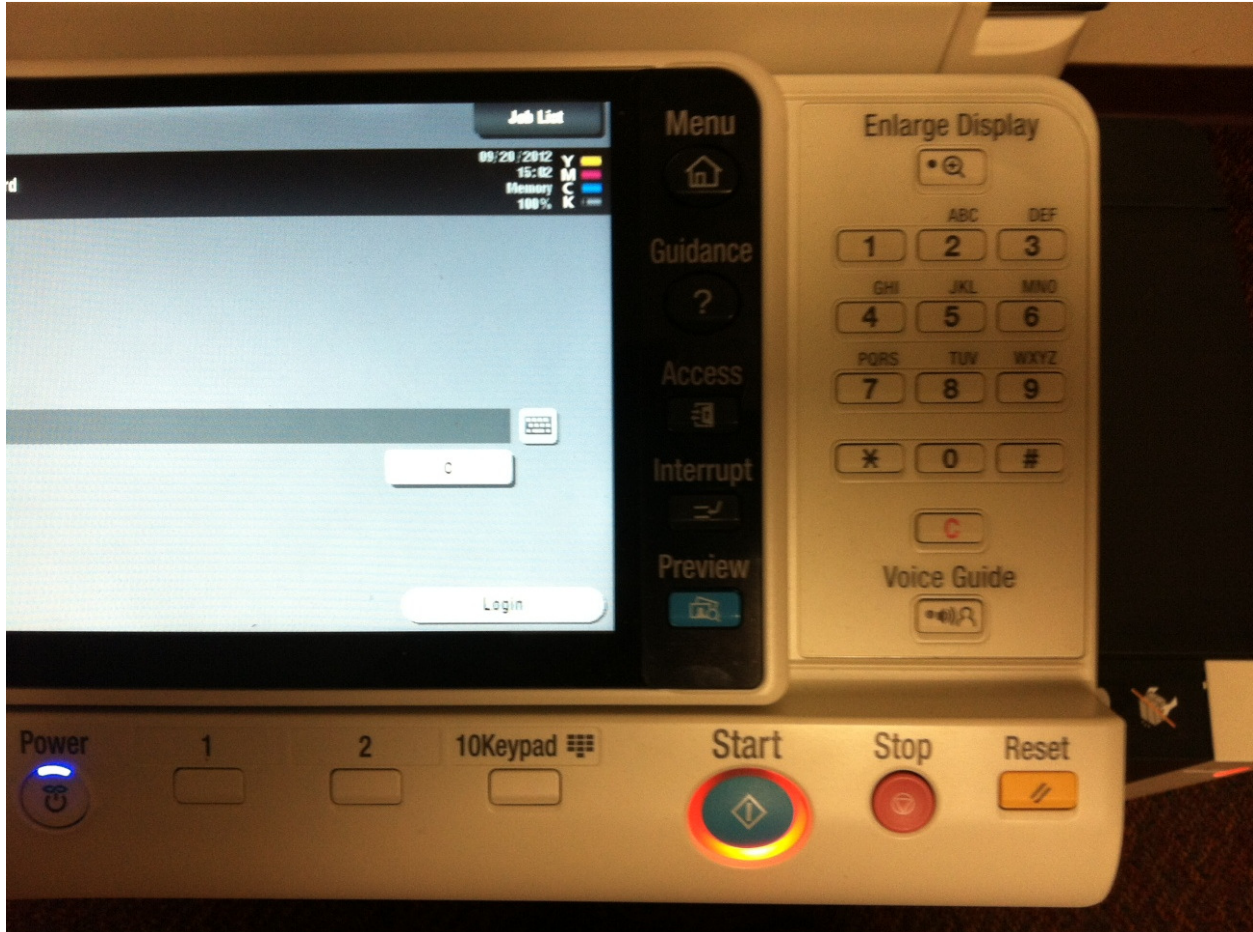


Printing with Account Codes



*When printing any items to the copiers you will need your account code. Enter your account code in the **PASSWORD BOX**. Once you enter the account code press **OK** and your print job will be sent to the copier.

Copier Account Codes



*Enter your assigned ACCOUNT CODE using the key pad and select **LOGIN**. Once you login all normal functions work as they did before. Make sure you **LOGOFF** the copier by selecting the **Access Key**.